

TS-15 Lane Closed or Occupied (Traffic Control Persons)

Two-Lane, Two-Way

Mobile Operations

Intermittent

Very Short Duration

Short Duration

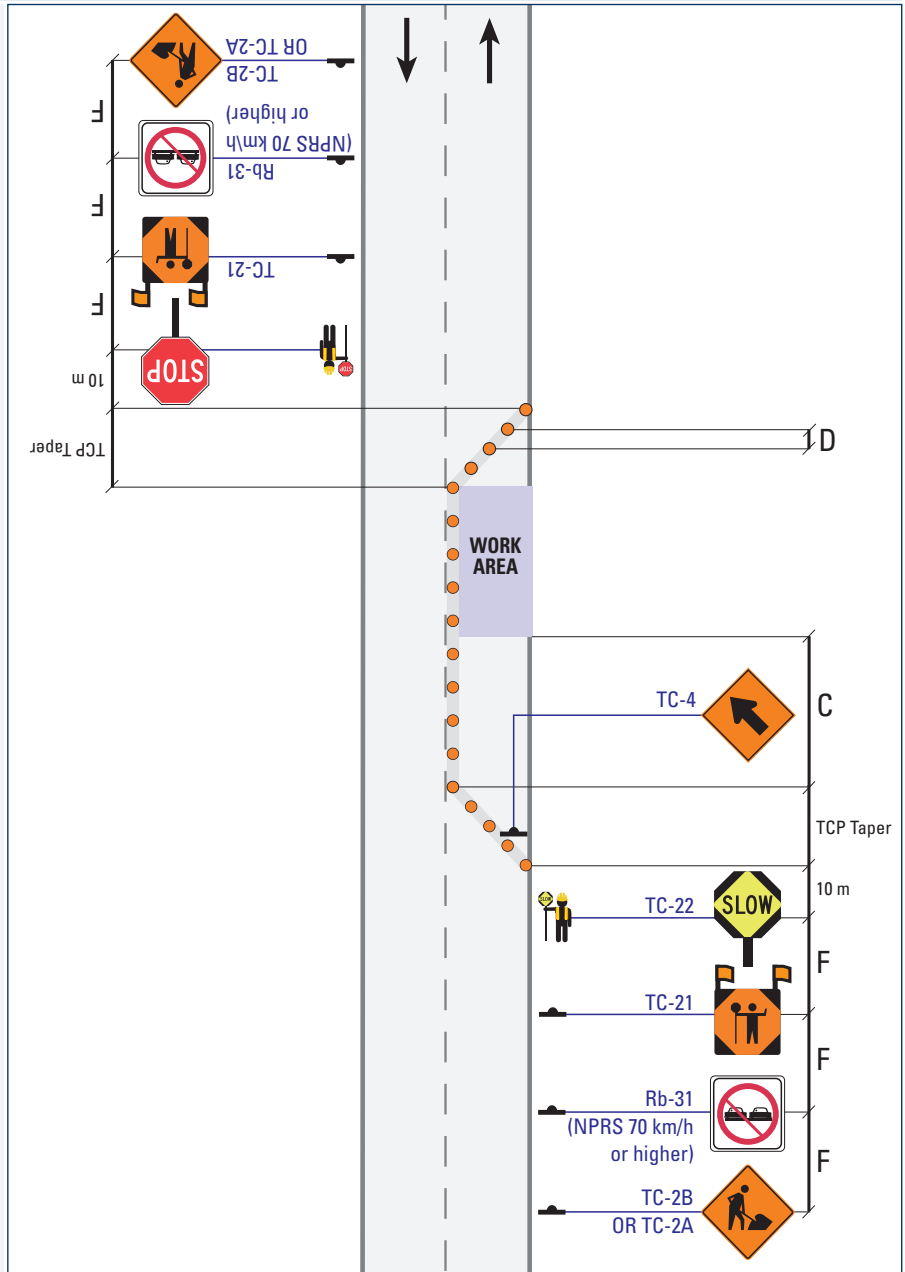
Long Duration

NOTES

i) On high speed (NPRS 70 km/h or higher) or where lane keeping/compliance is an issue, consider using TS-20 Lane Closed (Traffic Control Persons).

ii) For Short Duration projects on MTO highways, it is recommended to use TS-20.

For further detail on Work Zone components see [Table B \(Short/Long, pg. 241\)](#).



Normal Posted Regulatory Speed (km/h)

Label	Description	50	60	70	80	90
TCP	Taper Length for TCP Presence (m)	15	20	25	30	30
C	Longitudinal Buffer Area (LBA) (m)	(30)	(40)	50	60	75
D	Maximum Distance between Markers (m)	6	9	9	12	12
	Minimum Number of Markers for Taper	5	7	9	11	13
F	Distance between Construction Signs (m)	50	90	120	140	150